

## Case Study - consumer goods in Europe

# 4flow's integrated 4PL solution in transportation management quickly realizes transportation cost savings

### Background

- > Transportation network with a strong focus on Central Europe & connections to rest of Europe
- > Divisions in different consumer goods industries operating independently without cross-divisional synergies
- > An initial idea for a future transportation strategy had been defined internally
- > 4flow as 4PL was requested to further enhance and implement the control tower strategy

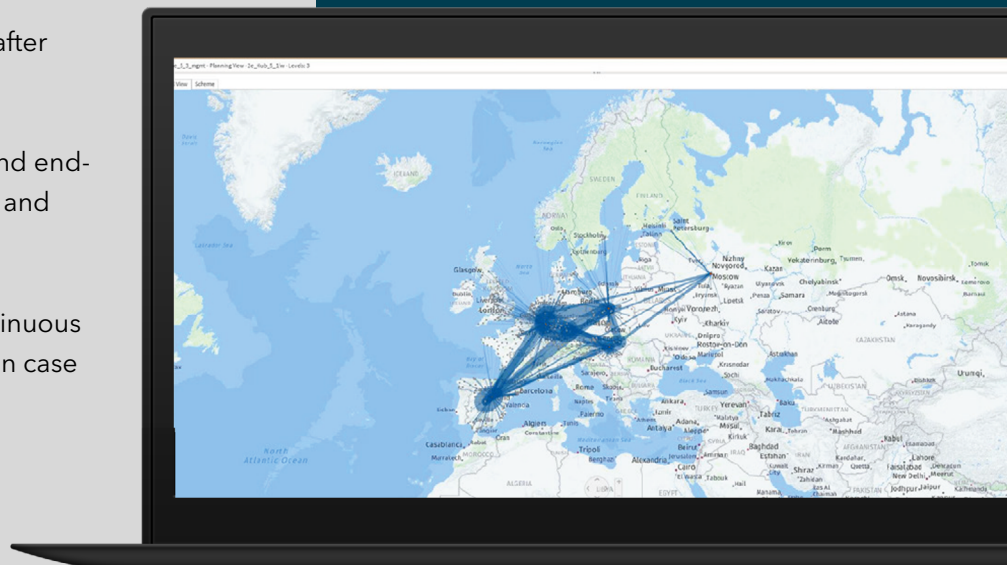
### Project approach

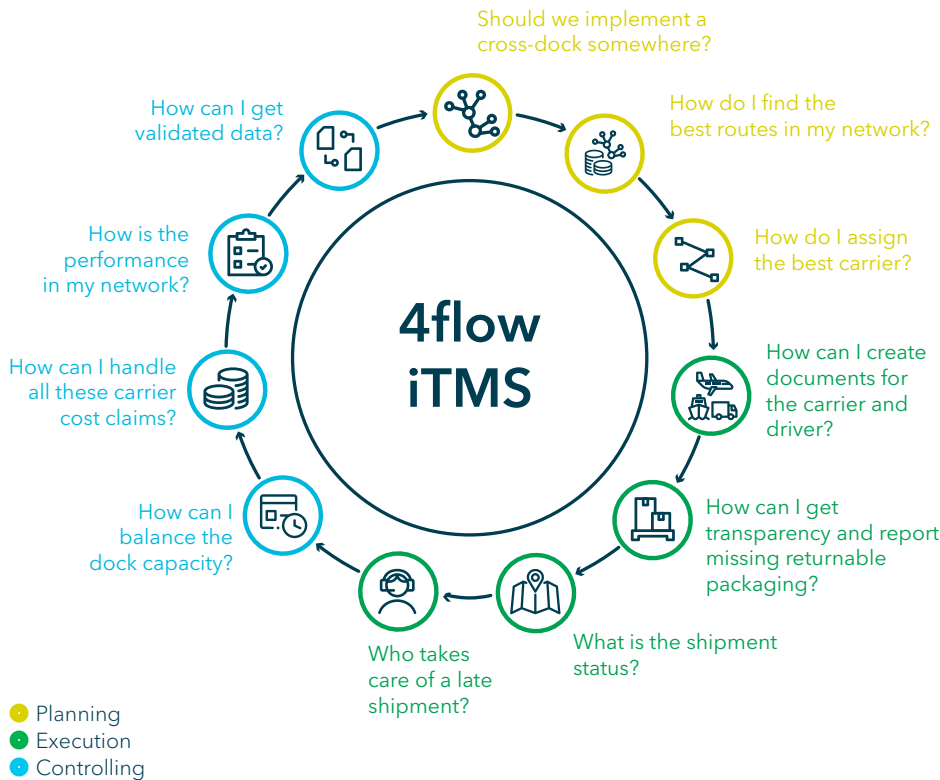
- > Analysis of the as-is situation based on the provided data
- > Estimation of opportunities and definition of a concept to realize the defined vision
- > Financial evaluation of different options for 4PL control tower concept
- > Implementation of derived 4PL control tower solution incl. pilot and roll-out in waves

### Outcome and benefits

- 1 Successful go-live four months after strategic decision
- 2 Harmonized logistics strategy and end-to-end visibility, as well as rapid and significant cost reduction
- 3 Real time track & trace and continuous KPI monitoring to react quickly in case of deviation

Further rollout of 4PL strategy to the network based on the joint project success





## Customize your iTMS set-up to answer your most pressing questions

With its modular architecture, the 4flow iTMS can be tailored to your individual needs.

Whether in strategic, operational or tactical planning: The 4flow iTMS modules give you the insights you need for efficient end-to-end transportation management.

## About 4flow

4flow is a leading provider of supply chain consulting, software and fourth-party logistics (4PL) services. With this cross-functional competency, we are able to meet and exceed the highest standards of quality and innovation.

20+

offices in Europe, North America, South America and Asia

1000+

team members globally

400+

customers globally

## Our expertise - supply chain software

Software for network optimization and fully integrated transportation and container management



**Digitization and software**



**Supply chain strategy**



**Sustainable supply chain**



**Network and transportation optimization**



**End-to-end transportation management**

## 4flow customers

Adient AGCO Knorr-Bremse  
Lear Magna MARS Volvo  
Yanfeng

Interested or have questions?

## Contact us!

Get in touch to have your questions answered or to schedule a live demo of our software solutions.

We look forward to hearing from you.

4flow software

**Michael Kagel**

Senior Expert,

Software Sales

+49 152 08679902

m.kagel@4flow.com

