

## Case study – Automotive supplier and manufacturing

# Rolling out integrated transportation management globally

### Background

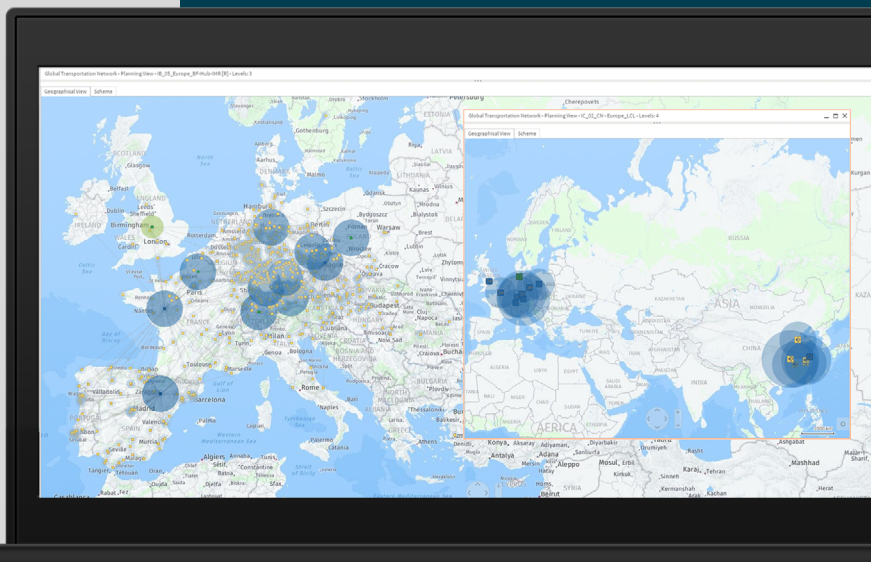
- > Decentralized transportation concepts and structures as well as siloed, unsustainable optimization
- > Synergy across business areas not being leveraged
- > No transparency or monitoring of costs or quality of transportation services purchased
- > Insufficient degree of IT-based support and dependence on logistics service providers

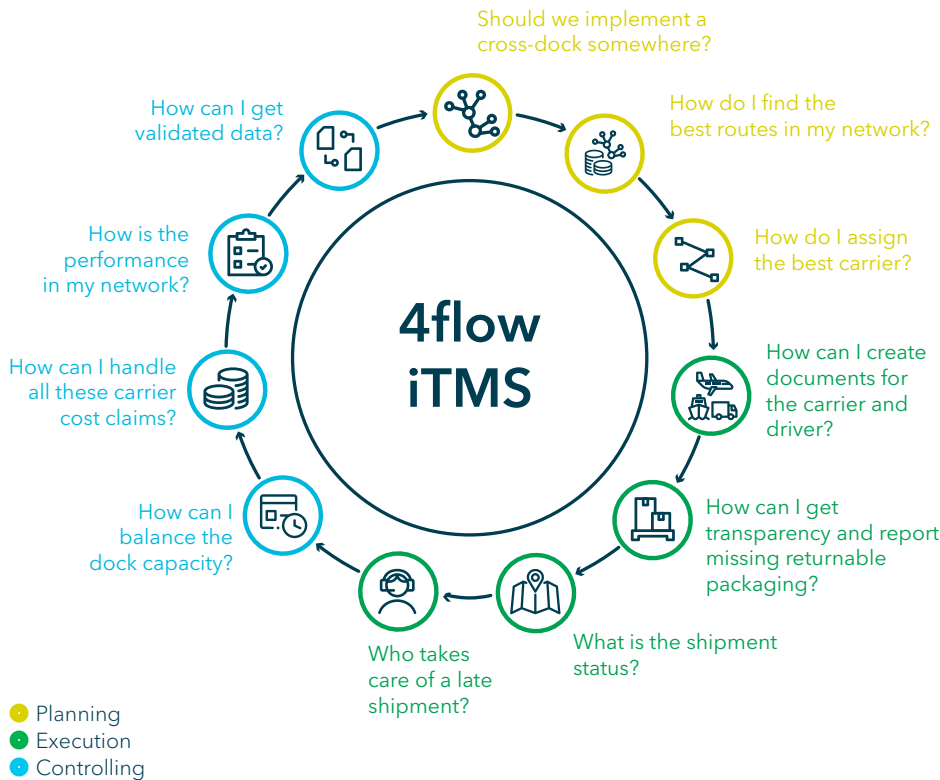
### Project approach

- > Develop an integrated transportation management concept (processes, IT, organization) and set up organizational structure
- > Optimize transportation networks and implement a transportation management system (TMS) in Europe and China
- > Roll out the transportation management concept including the necessary organization and IT in Europe, China, India and Latin America

### Outcome and benefits

- 1 Implementation of a standardized TMS including a new organizational structure in 7 plants in Europe and China and an additional 40 worldwide
- 2 Transportation cost savings over 10%
- 3 Transparency in costs and services thanks to KPI monitoring and freight cost management





## Customize your iTMS set-up to answer your most pressing questions

With its modular architecture, the 4flow iTMS can be tailored to your individual needs.

Whether in strategic, operational or tactical planning: The 4flow iTMS modules give you the insights you need for efficient end-to-end transportation management.

## About 4flow

4flow is a leading provider of supply chain consulting, software and fourth-party logistics (4PL) services. With this cross-functional competency, we are able to meet and exceed the highest standards of quality and innovation.

20+

offices in Europe, North America, South America and Asia

1000+

team members globally

400+

customers globally

## Our expertise - supply chain software

Software for network optimization and fully integrated transportation and container management



**Digitization and software**



**Supply chain strategy**



**Sustainable supply chain**



**Network and transportation optimization**



**End-to-end transportation management**

## 4flow customers

Adient AGCO Knorr-Bremse  
Lear Magna MARS Volvo  
Yanfeng

Interested or have questions?

## Contact us!

Get in touch to have your questions answered or to schedule a live demo of our software solutions.

We look forward to hearing from you.

4flow software

**Michael Kagel**

Senior Expert,

Software Sales

+49 152 08679902

m.kagel@4flow.com

