

## Case study – Automotive supplier

# Implementing and rolling out the 4flow iTMS for active transportation management

### Background

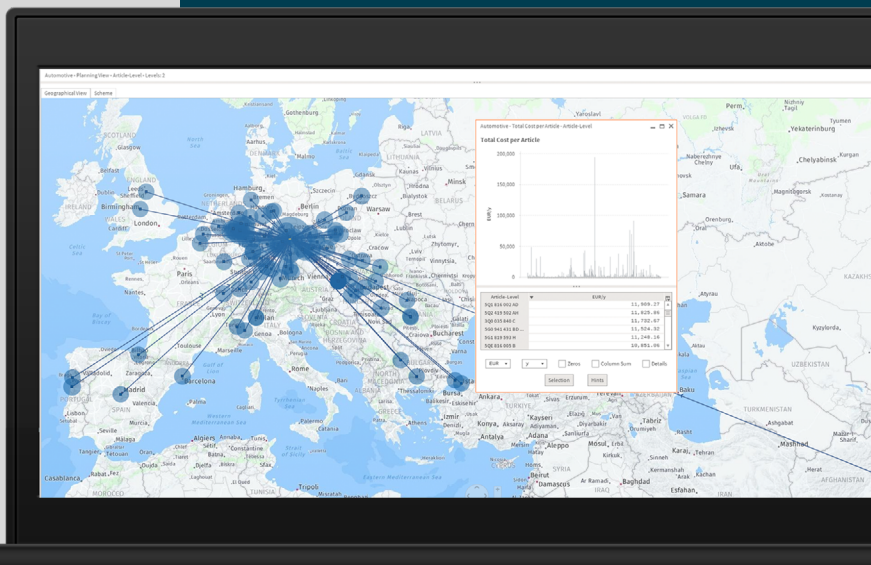
- > Automotive supplier with decentralized transportation concepts and structures
- > Transportation optimization performed only for a small number of relations and demands
- > Responsibility for managing transportation activities held by suppliers with no transparency on costs
- > Lack of visibility and monitoring of in-transit transportation
- > Dependence on logistics service providers for collecting transportation-relevant data

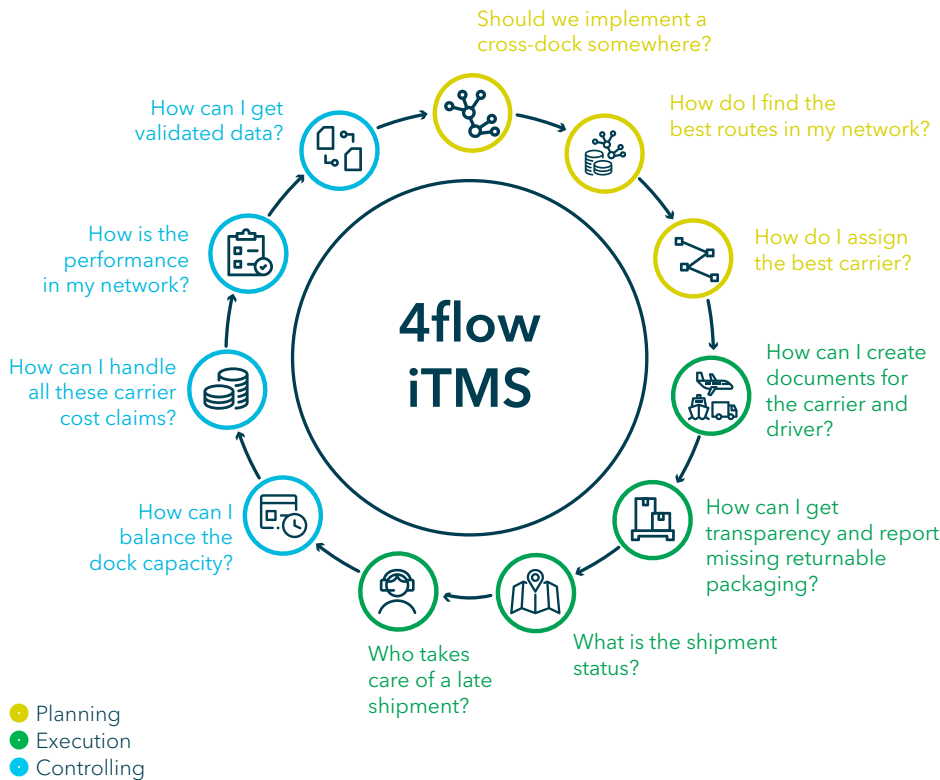
### Project approach

- > Implement 4flow iTMS modules and functionalities based on business needs
- > Integrate customer ERP system with iTMS for data transfers
- > Provide foundation for active transportation management (workflows, use cases and resulting outcomes)
- > Roll out iTMS for inbound transportation network at pilot plant

### Outcome and benefits

- 1 iTMS successfully implemented and responsibilities for active transportation management defined
- 2 Costs and services made transparent as a result of KPI monitoring and freight cost management
- 3 Pilot for Germany successfully implemented
- 4 Inbound and outbound transportation implemented at additional plants one year later





## Customize your iTMS set-up to answer your most pressing questions

With its modular architecture, the 4flow iTMS can be tailored to your individual needs.

Whether in strategic, operational or tactical planning: The 4flow iTMS modules give you the insights you need for efficient end-to-end transportation management.

## About 4flow

4flow is a leading provider of supply chain consulting, software and fourth-party logistics (4PL) services. With this cross-functional competency, we are able to meet and exceed the highest standards of quality and innovation.

20+

offices in Europe, North America, South America and Asia

1000+

team members globally

400+

customers globally

## Our expertise - supply chain software

Software for network optimization and fully integrated transportation and container management



**Digitization and software**



**Supply chain strategy**



**Sustainable supply chain**



**Network and transportation optimization**



**End-to-end transportation management**

## 4flow customers

Adient AGCO Knorr-Bremse  
Lear Magna MARS Volvo  
Yanfeng

Interested or have questions?

## Contact us!

Get in touch to have your questions answered or to schedule a live demo of our software solutions.

We look forward to hearing from you.

4flow software

**Michael Kagel**

Senior Expert,

Software Sales

+49 152 08679902

m.kagel@4flow.com

