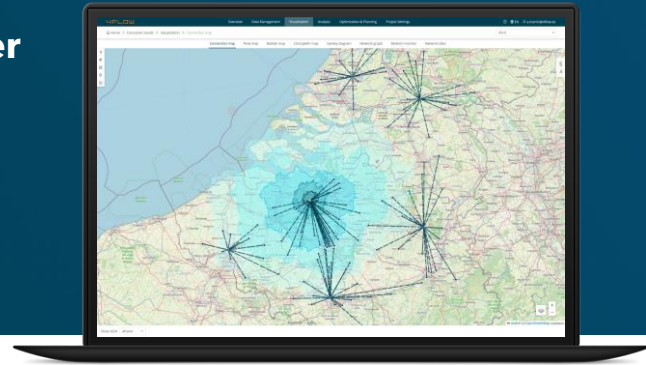




## Case Study - International HVAC manufacturer

# Evaluating network and shipment flows with 4flow



### The challenge

- › Global manufacturer with a complex inbound and outbound network across Europe and Asia
- › Flows from suppliers to plants, via central DCs, to customers
- › Operational shipment data (TMS) captured for analysis, with 160k shipments included
- › Existing network evolved over time, with potential inefficiencies in DC utilization and transport structure

### Solution approach

- › Mapped inbound and outbound transportation lanes, including volume, modes, LSP, and utilization
- › Performed center of gravity analysis to assess strategic DC/CDC positioning
- › Identified actionable initiatives: direct shipments, regional consolidations, delivery rerouting
- › Defined follow-up steps for feasibility assessment, IT alignment, and initiative execution

### Outcome and Benefits

- 1 Visualization of 2024 shipment flows enabled strategic lane assessments
- 2 Center-of-gravity analysis supported scenario-based DC/CDC evaluation
- 3 Structured process launched for feasibility validation across IT and logistics functions

€2.75M

million savings potential identified in just 2 months across eight initiatives

+160k

shipments analyzed in initial phase of the project

>5

actionable optimization initiatives launched

## Use cases in Industrial Manufacturing: Optimize complex global networks with 4flow



### Optimize distribution center locations

Use center-of-gravity analysis to reposition DCs and reduce transport costs.



### Evaluate carrier and mode mix

Analyze transport modes and provider performance to uncover cost-saving shifts.



### Optimize inbound flow consolidation and routing

Identify direct shipment and consolidation opportunities from global suppliers to plants.



### Support customer tender calculations

Review KPIs like cost per shipment to assist in customer tender calculations



### Improve outbound delivery routing

Reroute deliveries through optimal CDCs to boost service levels and reduce mileage.



### Model cost-saving scenarios

Simulate network setups to prioritize high-impact initiatives using KPI dashboards.

### Our supply chain expertise

Real results with 4flow

**20%+**

Savings in logistics costs

**10%+**

Reduction in inventory levels

**20%+**

Increase in process efficiency

### Interested or have questions? Contact us!

Get in touch to have your questions answered or to schedule a live demo of our software solutions.

We look forward to hearing from you.



### About 4flow

4flow is a leading provider of supply chain consulting, software and fourth-party logistics (4PL) services. With this cross-functional competency, we are able to meet and exceed the highest standards of quality and innovation.

**20+**

offices in Europe, North America, South America and Asia

**1300+**

team members globally

**400+**

customers globally

### 4flow customers include:

AGCO BASF BD BMW Bosch

Deichmann EDEKA Lear Magna Mars

Roche Siemens Volkswagen Volvo Cars